

# PSORIASIS



## WHAT IS PSORIASIS?

It is a chronic immune-mediated inflammatory disorder (IMID) that causes red, itchy, scaly patches of skin.

**4%** of people in the world have psoriasis

## TYPES OF PSORIASIS



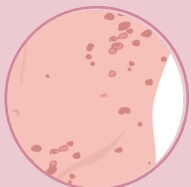
### Plaque Psoriasis

Inflamed skin and scaly, silvery plaques with a clear border



### Nail Psoriasis

Nail pitting and nail separation



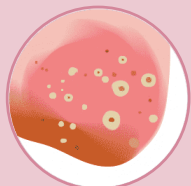
### Guttate Psoriasis

Teardrop-shaped bumps



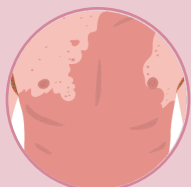
### Inverse Psoriasis

Rash appearing in skin folds



### Pustular Psoriasis

Pus-filled lesions



### Erythrodermic Psoriasis

Severely inflamed skin shedding in large sheets

## CAUSES

- Skin Trauma
- Infection
- Endocrine Disorders
- Stress
- Medicines
- Alcohol Abuse

## POSSIBLE TREATMENTS\*

\* See your Trillium Creek Dermatology provider for your best treatment options.

### Topical Treatments

Applied to the surface of the skin to treat symptoms. Includes creams, ointments, sprays, shampoos and lotions.

### Oral Treatments

Treat inside the body. Includes pills, tablets, capsules or liquids.

### Biologic Medications

Treat inside the body by blocking specific pathways of the immune system. Include injections such as:

- Cimzia
- Cosentyx
- Enbrel
- Humira
- Illumya
- Otezla
- Siliq
- Skyrizi
- Stelara
- Taltz
- Tremfya

HUMIRA



### Phototherapy

Treats by exposing the skin to ultra-violet light. Administered through special laser light treatment.

XTRAC

AEROLASE®

AEROLASE®

